

# GC20S-9 | GC25S-9 | GC30S-9 | GC33S-9

## Medium-Capacity LPG Cushion Tire Forklifts



- Medium capacity 4,000-6,500 lb.
- LPG power
- Cushion tires
- Fully customizable operator compartment

[Contact Dealer for Pricing](#)

[Find a Dealer](#)

[View Current Offers](#)

[Request a Demo](#)

## Overview

The reliable GC20S-9 to GC33S-9 IC cushion forklifts provide performance to get the job done. These 4,000 to 6,500-pound capacity trucks are true all-around players, providing peak performance in any application.

- Advanced ergonomics help operators work longer shifts comfortably
- Durable components

## Specs & Compare

Medium-Capacity LPG Cushion Tire Forklifts Key Specifications				
GC20S-9	GC25S-9	GC30S-9	GC33S-9	
<b>Max Load Capacity</b>				
4,000 lb	5,000 lb	6,000 lb	6,500 lb	
Engine				
GC20S-9	GC25S-9	GC30S-9	GC33S-9	
<b>Engine Fuel</b>				
LPG	LPG	LPG	LPG	
<b>Engine Model</b>				
GCT/GK25	GCT/GK25	GCT/GK25	GCT/GK25	
Performance				
GC20S-9	GC25S-9	GC30S-9	GC33S-9	

Max Load Capacity				
4,000 lb	5,000 lb	6,000 lb	6,500 lb	
Load Center				
24 in	24 in	24 in	24 in	
Travel Speed - Loaded				
10.6 mph	10.6 mph	10.3 mph	10.3 mph	
Travel Speed - Unloaded				
10.9 mph	10.9 mph	10.9 mph	10.9 mph	
Lift Speed - Loaded				
124 ft/min	122 ft/min	120 ft/min	118 ft/min	
Lift Speed - Unloaded				
128 ft/min	128 ft/min	128 ft/min	128 ft/min	

Dimensions				
GC20S-9	GC25S-9	GC30S-9	GC33S-9	
Length				
130.9 in	133.1 in	135.4 in	136.8 in	
Wheelbase				
56.3 in	56.3 in	56.3 in	56.3 in	
Height - Mast Lowered				
83.9 in	83.9 in	83.9 in	83.9 in	
Free Lift				
5.8 in	5.8 in	6 in	6 in	
Load Management Center				
16.3 in	16.3 in	16.5 in	16.5 in	
Overhead Guard Height				
83.6 in	83.6 in	83.6 in	83.6 in	

Electrical System				
GC20S-9	GC25S-9	GC30S-9	GC33S-9	
Rated Power				
44 kW	44 kW	44 kW	44 kW	

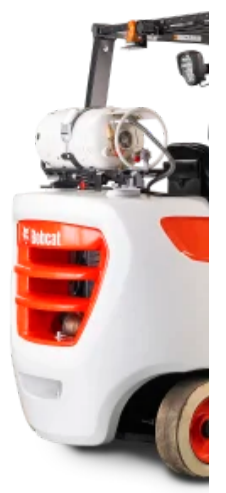
Tires				
GC20S-9	GC25S-9	GC30S-9	GC33S-9	
Tire Type				
Cushion	Cushion	Cushion	Cushion	

## Features & Benefits

[Expand All](#)

- Operational Enhancements <sup>8</sup>
- Simplified Serviceability <sup>4</sup>
- Enhanced Productivity <sup>5</sup>
- Durable Reliability <sup>4</sup>
- Lower Cost of Ownership <sup>5</sup>

## Related Models



[View All Internal Combustion Cushion Tire Forklifts >](#)



**WARNING:** This product can expose you to chemicals including engine exhaust (including diesel engine exhaust when equipped), lead and lead compounds, mineral oils, soots, phthalates, and carbon monoxide which are known to the State of California to cause cancer and birth defects or other reproductive harm. For more information go to [www.P65Warnings.ca.gov](http://www.P65Warnings.ca.gov).

Certain specification(s) are based on engineering calculations and are not actual measurements. Specification(s) are provided for comparison purposes only and are subject to change without notice. Specification(s) for your individual equipment will vary based on normal variations in design, manufacturing, operating conditions, and other factors.

REGION SELECTOR

- NORTH AMERICA (EN)

BUYING TOOLS

BUILD & QUOTE

SEARCH INVENTORY

FIND A DEALER

SPECIAL OFFERS

REQUEST A DEMO

CONTACT A DEALER

BUYING RESOURCES

CONTACT US

CUSTOMER SERVICE

WEBSITE FEEDBACK

DEALER OPPORTUNITIES

GOVERNMENT SALES

FREQUENTLY ASKED QUESTIONS

EMAIL SIGN-UP

COMPANY

ABOUT US

INNOVATION

COMMUNITY

PEOPLE

BOBCAT STORIES

AMBASSADORS

LEGAL

PRIVACY POLICY

TERMS & CONDITIONS

RECALLS

**One Tough Animal.**



Bobcat Company is a member of the Doosan Group. Doosan is a global leader in construction, grounds maintenance and material handling equipment, power and water solutions, and engineering that has proudly served customers and communities for more than a century.

Bobcat®, the Bobcat logo, the colors of the Bobcat machine and various other product names referenced on this website are trademarks of Bobcat Company in the United States and various other countries.

©2024 Bobcat Company. All rights reserved.