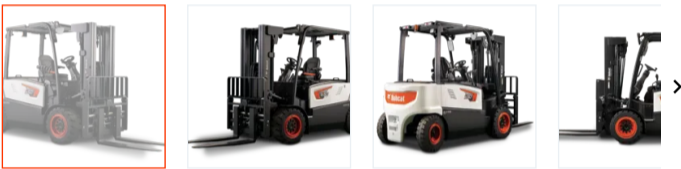


B40X-7 | B45X-7 | B50X-7

Large Capacity 4-Wheel Pneumatic Tire Electric Counterbalance Forklifts



- Large chassis trucks
- 80-volt electrical system provides power when you need it
- 8,000- to 10,000-pound capacity
- 5-year, 10,000-hour oil-cooled disc brakes
- Fingertip controls are available
- Guardian Stability System (GSS)
- Operator Sensing System (OSS)

[Contact Dealer for Pricing](#)

[Find a Dealer](#)

[View Current Offers](#)

[Request a Demo](#)

Overview

- Fully adjustable seat and steering column
- Operator Sensing System (OSS) ensures top-tier built-in safety features
- 80-volt electrical system delivers high performance with minimal power consumption
- Industry-leading total cost of ownership, offering exceptional value without compromise

Specs & Compare

Large Capacity 4-Wheel Pneumatic Tire Electric Counterbalance Forklifts Key Specifications			
B40X-7	B45X-7	B50X-7	
Machine Rated Capacity			
8,000 lb	9,000 lb	10,000 lb	
Voltage			
80 V	80 V	80 V	
Performance			
B40X-7	B45X-7	B50X-7	
Machine Rated Capacity			
8,000 lb	9,000 lb	10,000 lb	
Load Center			

24 in	24 in	24 in
Dimensions		
B40X-7	B45X-7	B50X-7
Length		
157.8 in	157.8 in	158.9 in
Wheelbase		
78.7 in	78.7 in	78.7 in
Height - Mast Lowered		
91.7 in	92.1 in	92.1 in
Free Lift		
5.9 in	6.3 in	6.3 in
Overhead Guard Height		
92.3 in	92.5 in	92.5 in
Power		
B40X-7	B45X-7	B50X-7
Voltage		
80 V	80 V	80 V

Features & Benefits

[Expand All](#)

- Operational Enhancements ¹⁴
- Simplified Serviceability ⁵
- Enhanced Productivity ¹²
- Durable Reliability ⁷
- Lower Total Cost of Ownership ²

Related Models



B50X-7

Machine Rated Capacity

Voltage

[View Model](#)



B45X-7

Machine Rated Capacity

Voltage

[View Model](#)



B40X-7

Machine Rated Capacity

Voltage

[View Model](#)



[View All Electric Counterbalance Forklifts](#)



WARNING: This product can expose you to chemicals including engine exhaust (including diesel engine exhaust when equipped), lead and lead compounds, mineral oils, soots, phthalates, and carbon monoxide which are known to the State of California to cause cancer and birth defects or other reproductive harm. For more information go to www.P65Warnings.ca.gov.

Certain specification(s) are based on engineering calculations and are not actual measurements. Specification(s) are provided for comparison purposes only and are subject to change without notice. Specification(s) for your individual equipment will vary based on normal variations in design, manufacturing, operating conditions, and other factors.

REGION SELECTOR

 NORTH AMERICA (EN)

BUYING TOOLS

BUILD & QUOTE

SEARCH INVENTORY

FIND A DEALER

SPECIAL OFFERS

REQUEST A DEMO

CONTACT A DEALER

BUYING RESOURCES

CONTACT US

CUSTOMER SERVICE

WEBSITE FEEDBACK

DEALER OPPORTUNITIES

GOVERNMENT SALES

FREQUENTLY ASKED QUESTIONS

EMAIL SIGN-UP

COMPANY

ABOUT US

INNOVATION

COMMUNITY

PEOPLE

BOBCAT STORIES

AMBASSADORS

LEGAL

PRIVACY POLICY

TERMS & CONDITIONS

RECALLS



One Tough Animal

DOOSAN

Bobcat Company is a member of the Doosan Group. Doosan is a global leader in construction, grounds maintenance and material handling equipment, power and water solutions, and engineering that has proudly served customers and communities for more than a century.

Bobcat®, the Bobcat logo, the colors of the Bobcat machine and various other product names referenced on this website are trademarks of Bobcat Company in the United States and various other countries.

©2024 Bobcat Company. All rights reserved.