

Pioneer HVLS Fan

Standard Sizes:

Diameters of 8', 12', 16', 20' and 24'

HVLS Fans reduce the apparent temperature experienced by the people working beneath them. This allows owners, managers, and designers to leave the A/C system at a higher set-point without compromising comfort. Savings can be as much as 6 percent per degree, and green energy credits are also available for air quality.

HVLS fans can dramatically reduce HVAC air intake by circulating and destratifying climate controlled air volumes. The result is lower operational costs, stable indoor air quality, and reduced maintenance needs.

Warranty

PIONEER offers a 5-year warranty on all parts.

Guarantee

PIONEER will provide our standard warranty or **match any documented competitive warranty in the industry** for comparable models. There is no fine print.

**NO
DEAD
ZONE**



In order to make the most of every rotation a blade must have a deeper angle of attack where it is moving slower. This is the shape used by Pioneer Fans, and is the innovation responsible for a lighter fan that moves more air with lower horsepower and a lower RPM.

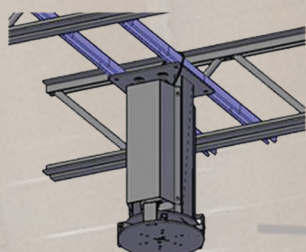


Rugged. Dependable. PIONEER.

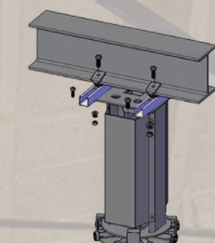
**Quality Dock Products
Long Lasting
Easy to Install and Operate
Safe**

Pioneer HVLS Fan

Mounting Options



Standard Mount



I-Beam Mounting Kit



Extension Kit & Angle Bracket

PIONEER offers a complete line of finely crafted, technologically advanced loading dock equipment, including **Hydraulic, Air Operated and Mechanical Pit Levelers, Edge-of-Dock and Hydraulic Top of Dock Levelers, Portable Dock boards, Vehicle Restraints, Dock Seals & Shelters, High Speed Fabric Roll-Up Doors,** and other quality accessories. Just **call us toll free** for personal, professional customer assistance and responses to all of your product needs.

toll free
1.800.251.3382

20' Diameter Pioneer HVLS Fan

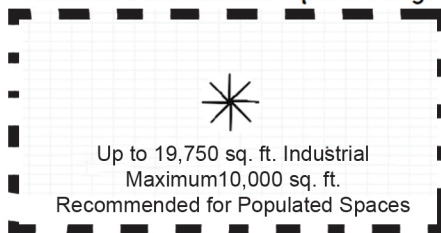
Direct Cooling Region Direct Heating Region Maximum Destratification Square Footage



Up to 80' x 80'

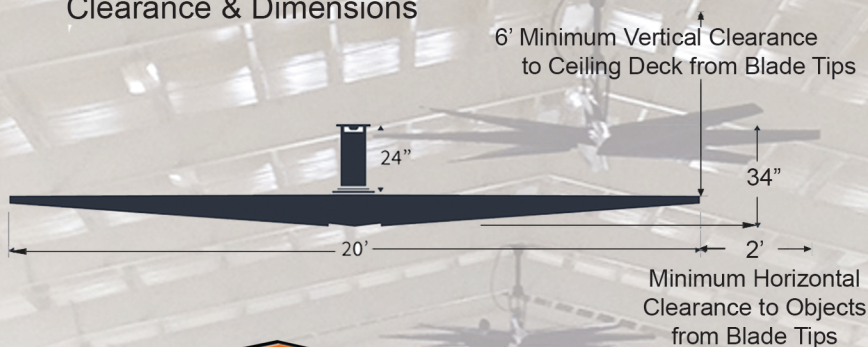


Up to 40' x 40'



Up to 19,750 sq. ft. Industrial
Maximum 10,000 sq. ft.
Recommended for Populated Spaces

Placement Requirements Clearance & Dimensions



Overheating means lost productivity, increased mistakes, and lower morale, and the numbers prove it, but we've run the math in the table below so you don't have to.

Productivity Loss due to Heat

Apparent °F	Relative Productivity	Productivity Loss
71	99.9%	~0%
80	96.23%	3.77%
85	92.07%	7.93%
90	87.40%	12.60%
95	83.03%	16.97%
100	79.77%	20.23%
105	78.41%	21.59%

Source: Seppanen, O., Fisk, W.J. and Lei, Q.H. (2006)



P.O. Box 338 • Spring Hill, Tennessee 37174

Phone: 931.486.2296 • Fax: 931.486.0316

PIONEERLEVELER.COM

08/21