

# HPT

HAND PALLET  
TRUCKS



5,500 lb. Capacity

## Product Guide

### 2-Year Pump Warranty

#### PRIMARY FEATURES INCLUDE:

- Heavy-Duty Steel Construction
- Re-enforced Stress Points
- 210° Steer Arc for Easy Maneuvering
- Ruggedly Built/Extra Welds and Supports
- Chrome-plated Ram and Piston

#### AVAILABLE SIZES:

- HPT28-1-06 = 27 X 48
- HPT28-2-06 = 20.5 X 48
- HPT28-3-06 = 20.5 X 42
- HPT28-4-06 = 27 X 42
- HPT28-5-06 = 20.5 X 36



# HPT

## HAND PALLET TRUCKS



## Technical Data

### Technical Data

- Load Capacity: 5,500 lbs.
- Lift (H2): 7.7"
- Lowered Height (H1): 2.9"
- Steer Wheels (A): 7.1" x 2.0"
- Load Wheels (B): 2.9" x 3.7"
- Fork Length (L): 48"\*
- Fork Width (W): 27"\*
- Total Weight: 202 lbs.



The Doosan hand pallet truck is consistently reliable. With a load capacity of 5,500 lbs. it's the ideal hand pallet truck for most material handling needs.

### General Data

- Totally enclosed bearings guard against failure from dust and prolongs service life
- Steel draw bar with protected handle for safety and strength
- Pivot mounted large polyurethane steer wheels ensure stability on uneven surfaces
- 210° steer handle arc enables easy maneuvering of pallet truck in confined areas
- Large polyurethane wheels for long life and improved stability. Rolls quietly and protects floors

### Frame & Forks

- The frame and forks of Doosan HPTs are of a welded steel structure, with heavy reinforcement at high stress point areas
- The fork ends are rounded and tapered to minimize damage at pallet entry
- Pallet entry and exit rollers allow easy pallet entry and exit with minimum damage
- For ease of maintenance and lubrication, there is easy access to all bearing points

### Hydraulics

- Heavy duty design with chrome-plated pistons and overload safety device
- Even lowering of load is ensured by the load lowering valve
- Doosan pallet jacks are designed for easy maintenance and access to service hydraulic unit

\* Additional Sizes are Available

### Draw bar and Control Handle

- The closed loop design control handle is manufactured from steel for extra strength. The draw bar gives perfect control and protection for the operator's hands in restricted areas.
- The covered handle ensures positive control in all environments
- The hydraulic hand control has three positions: lift, lower and neutral, provide precise load control
- The control handle allows for easy lowering pump effort

### Pump Unit

- Fully enclosed pump seals out dirt and moisture, preventing damage to seals
- Chrome-plated ram and piston with high quality polyurethane seals ensure performance

### Wheels and Bearings

- Premium high quality polyurethane steer and load wheels provide superior rolling qualities yet resist chunking and cracking. All wheels fitted with sealed, lubricated precision bearings for ease of rolling and low maintenance. Nylon, Steel and Dual Load Wheels available for special order

### ASME

- Standard truck meets all applicable mandatory requirements of Part II – ASME B56.10 Safety Standard for Manual Industrial Trucks

### For Your Safety

- Do not operate or repair the Doosan hand pallet truck unless you have been trained and authorized
- Read all warnings and instructions before operating your HPT
- Do not operate the Doosan HPT until you have checked its condition. Give special attention to the wheels, handle, forks, lift and lower controls
- Do not operate a damaged or faulty truck
- Operate Doosan hand pallet truck only from the designated operating position. Never place any part of your body on the lifting mechanism or under the forks or load
- Do not carry passengers on the HPT
- Do not handle unstable or loosely stacked loads. Use special care when handling long, high or wide loads to avoid losing the load, striking bystanders, or tipping the truck

### WARRANTY

Doosan provides warranty for equipment failure caused by original manufacturer's defects.

### Warranty for Parts:

- 24 Months; Hydraulic Pump
- 18 Months: Chassis
- 12 Months: Axles
- 6 Months: Wheels & Bearings

### Conditions of Warranty

- Please do not send defective parts back to us unless you are requested to do
- Should you have a warranty related issue, please contact Doosan Parts for additional instruction

### Warranty Due to Shipment:

If it is found that your products have been damaged in transit, please do not refuse shipment but notify Doosan Parts at once. If possible, take necessary picture evidence of damages. Failure to follow this procedure may result in refusal by the carrier to honor any claims with a consequent loss to the consumer.

### Warranty Parts Return:

- <1> Please do not return defective parts without prior authorization
- <2> Defective parts must be returned to us within 30 days of the approval
- <3> Customer may be charged if defects are determined to be caused by improper operation

### Limitations

These and others are among the reasons why Doosan may deny warranty claims

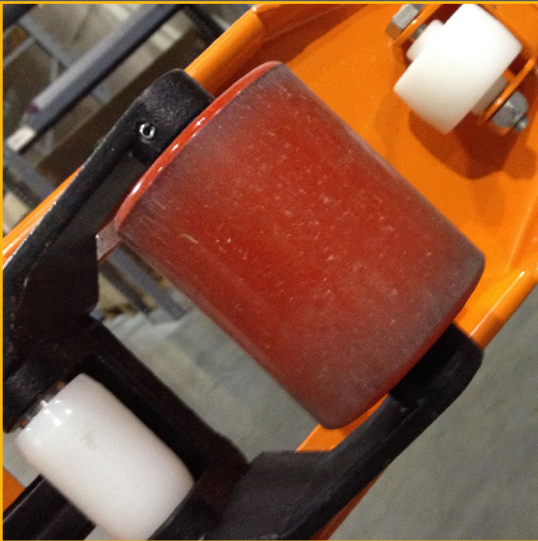
- <1> Equipment modified, design changed or parts replaced which are not approved by Doosan
- <2> Equipment being used in improper environment, such as cold storage area (except those with cold storage protection), overheating area, dusty area, moisture area, etc
- <3> Equipment damaged by improper storage/use or accident
- <4> Equipment used beyond rated capacity
- <5> Equipment not be provided with proper maintenance
- <6> Failure to follow operation manual instruction
- <7> Doosan reserves the right to replace entire unit in lieu of repair

# HPT

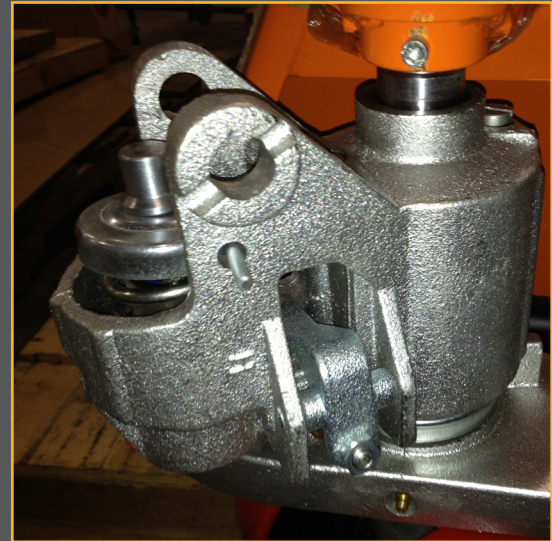
HAND PALLET TRUCKS

## Why Choose Doosan HPTs (Hand Pallet Trucks)

Over the years our HPT line has outsold and outperformed all other competitive products. That's because our standard units are made to the same advanced specifications that our competitors sell as their 'Heavy Duty' units.



Compare ours to theirs and we are confident that you will agree, Doosan's HPT products are by far the best products available for the money.



▲

- Double Nylon Guide Wheels on All Models

- Heavy Duty Adjustable Turnbuckles & Guide Rods

▼



▲

- Reliable German Engineered Hydraulic Pumps, 2-Year Warranty

- Grease Fittings at Key Points for Longer Life

▼



▲

- Sealed Roller Bearings on all Load and Steer Wheels



# HPT

HAND PALLET  
TRUCKS

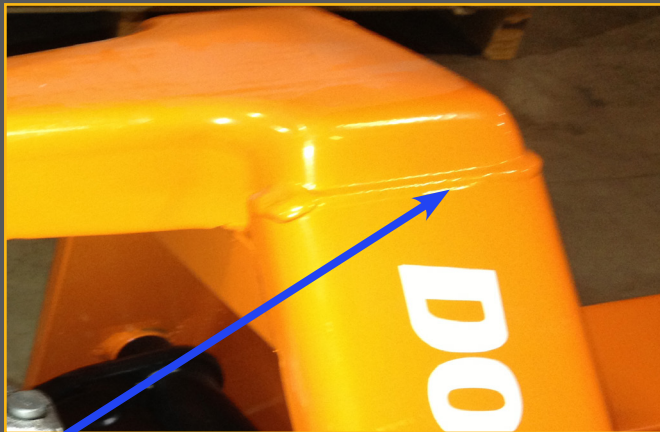
Quality Controlled Manufacturing  
Superior Construction  
Superior Welding



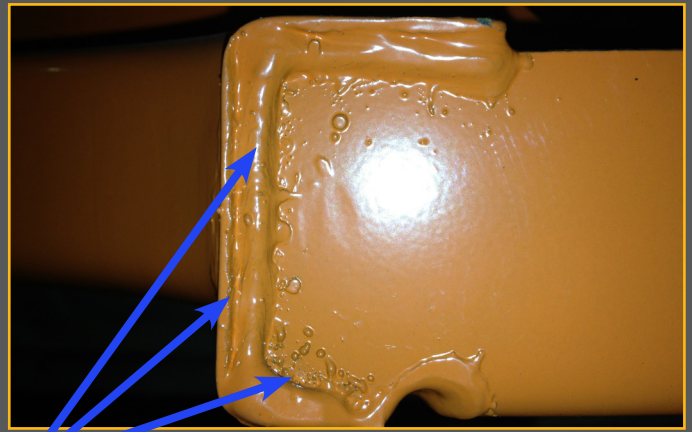
OURS: ONE PIECE SOLID CONSTRUCTION



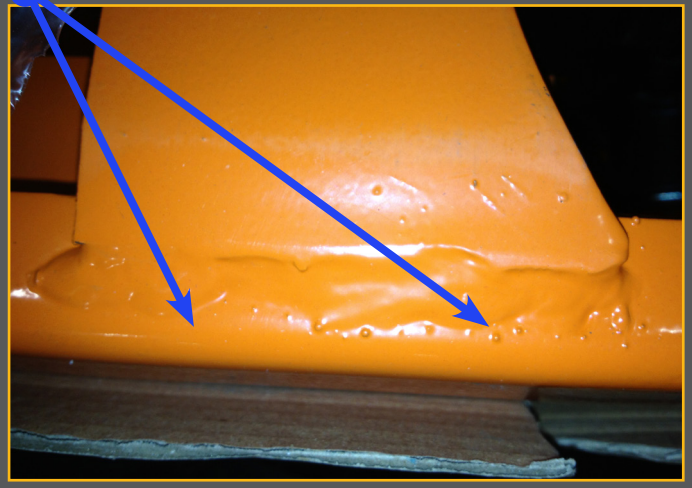
THEIRS: WEAK TWO-PIECE CONSTRUCTION



OURS - STRONG PRECISION WELDS



THEIRS - SLOPPY WEAK WELDS!



# HPT

HAND PALLET  
TRUCKS



*Doosan Industrial Vehicle America Corp.  
2745 Mill Center Parkway  
Suite #400  
Buford, GA 30518  
p) 678-745-2200  
f) 678-745-2250  
[www.DoosanLift.com](http://www.DoosanLift.com)*